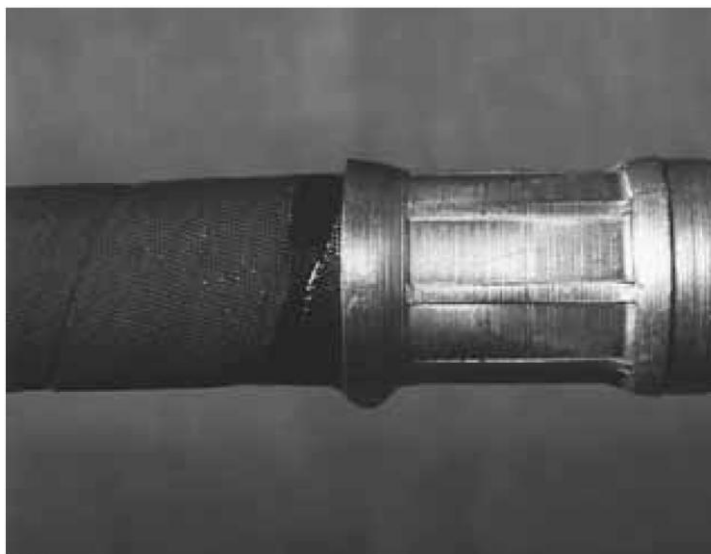


Safe Hydraulic News



1800 HOSE VAN
HYDRAULIC & INDUSTRIAL HOSE SERVICES



Coupling Interface Weeping

Problem:

Fluid is seeping or weeping from the end of the ferrule.

This may be caused by:

- Insufficient insertion of the hose into the coupling [or onto the stem] during assembly
- An under-crimped or over-crimped coupling
- Excessive vibration, flexing and tugging of the hose has weakened the hose/fitting interface, reducing the assembly's ability to prevent fluid seepage.
- Mismatched hose and coupling [from two different manufacturers]

Solution:

Whether the assembly has been undercrimped or overcrimped, or the stem has been improperly inserted, the hose assembly must be replaced with one that has been properly assembled.

The patented Gates MegaCrimp® coupling, designed for "weep-free" performance and easy insertion.



For further information, refer to the Gates Safe Hydraulics Catalogue, available at:
www.1800hosevan.com.au/catalogues